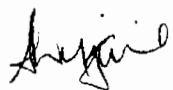


SIDES Metres		ANGLES OF DIRECTION	CO-ORDINATES Y System WG 19° X			S.G. No. 3471/2005
				0,00	+3 700 000,00	Approved  for Surveyor-General 2005.08.05 Sheet 1 of 2 sheets
AB	324,85	269 12 30	A	+58 865,82	+65 346,88	
BC	431,58	0 53 20	B	+58 541,00	+65 342,39	
CD	166,11	89 02 30	C	+58 547,69	+65 773,92	
DE	39,71	84 37 30	D	+58 713,78	+65 776,70	
EF	22,86	76 06 00	E	+58 753,32	+65 780,42	
FG	13,46	166 06 00	F	+58 775,51	+65 785,91	
GH	15,75	128 03 00	G	+58 778,74	+65 772,85	
HJ	63,83	90 00 00	H	+58 791,14	+65 763,14	
JK	21,14	172 42 00	J	+58 854,98	+65 763,14	
KL	32,94	223 24 40	K	+58 857,66	+65 742,17	
LM	70,16	162 55 20	L	+58 835,02	+65 718,24	
MN	36,23	174 38 00	M	+58 855,63	+65 651,17	
NP	43,22	248 21 50	N	+58 859,02	+65 615,10	
PQ	72,07	183 09 30	P	+58 818,84	+65 599,16	
QR	123,79	179 11 10	Q	+58 814,87	+65 527,21	
RS	9,73	222 04 00	R	+58 816,63	+65 403,43	
ST	10,00	133 35 40	S	+58 810,11	+65 396,20	
TU	25,00	89 11 10	T	+58 817,35	+65 389,30	
UV	16,04	125 53 00	U	+58 842,35	+65 389,66	
VA	34,98	162 34 40	V	+58 855,34	+65 380,26	
INDICATORY DATA						
FW	1,00	256 06 00	W	+58 724,54	+65 785,67	
FX	1,00	166 06 00	X	+58 725,75	+65 784,94	
		28A3 ⊕		+58 806,07	+65 801,76	
		29A3 ⊕		+58 652,04	+65 782,65	

Beacon Descriptions:

- Ø, E Iron Standard
- C Wooden fence post
- D Drill hole on wall
- F No beacon
- All others 12mm iron peg
- B Rail corner fence post

The figure A B C D E F G H J K L M N P Q R S T U V represents 12,4199 Hectares of land, being

Erf 8624, a portion of Erf 1443 Hout Bay

Situate in the City of Cape Town Province of the Western Cape
 Administrative District of Cape
 Surveyed in December 2003 to July 2005
 by me *R. C. Abrahamse* R. C. Abrahamse (PLS0002) Professional Land Surveyor

This diagram is annexed to No. dated i.f.o. Registrar of Deeds	The original diagram is SG. No. 3735/1904 annexed to Transfer 1905- -9948	S. G. File No. S/5327/47 S.R. No. E 1615 /2005 Comp. AHNB-2244(M218) AHNB-2253(M220) AHNB-2272(M227) AHNB-2281(M230) LPI C0160024

Erf 8624, portion of Erf 1443 Hout Bay

Situate in the City of Cape Town

Province of the Western Cape

Administrative District of Cape

S.G. No.

3471/2005

Approved

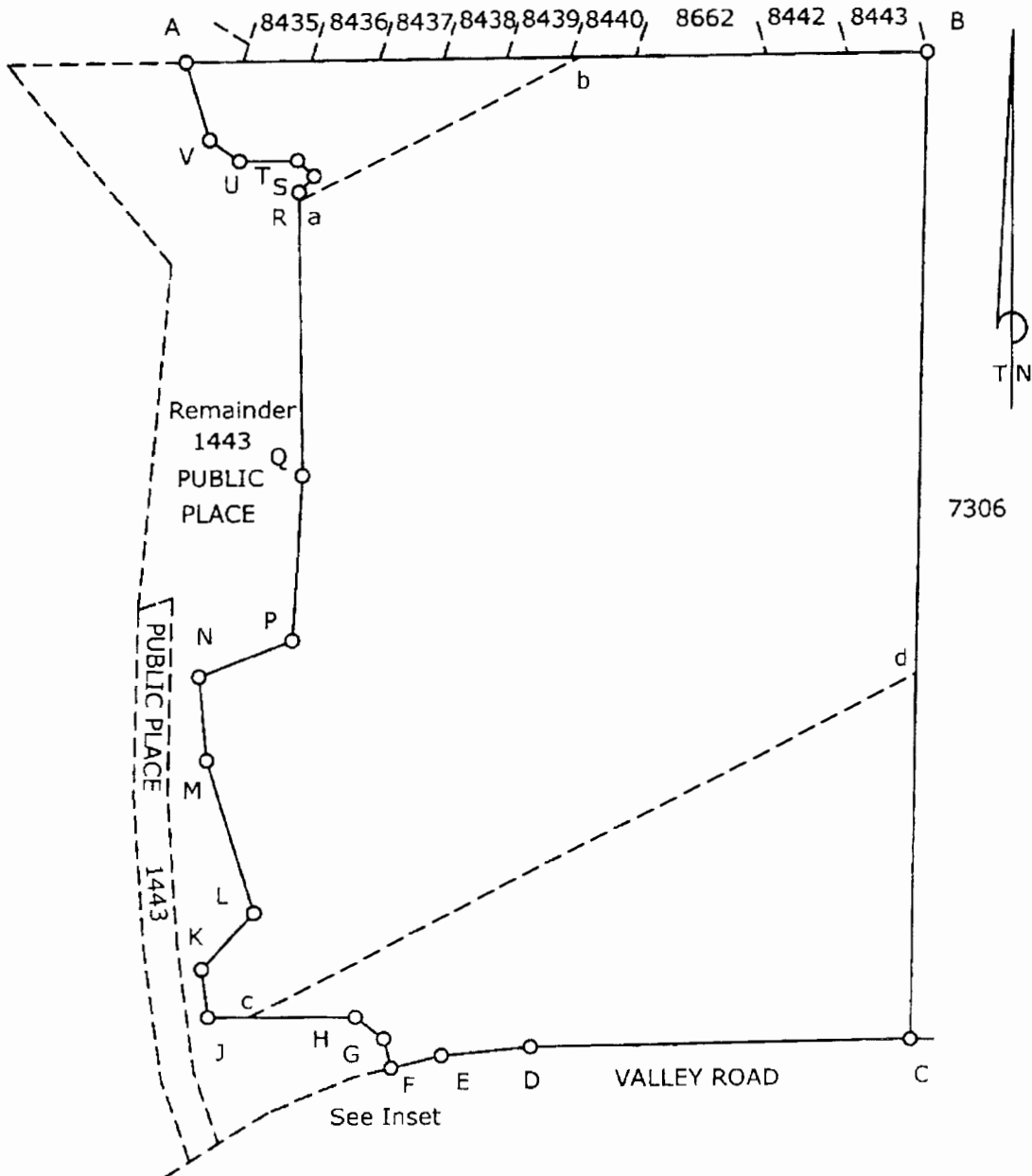
for Surveyor-General

2005.08.05

**FOR SUBDIVISION OF THIS
PROPERTY VIDE GENERAL
PLAN No. 3472/2005.....**

GENERAL PLAN No. 7195/1998

Sheet 2 of 2 sheets

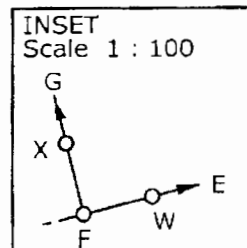


Scale 1 : 3000

Surveyed in December 2003 to July 2005

by me

R. C. Abrahamse (PLS0002) Professional Land Surveyor



MAIN FIGURE

SIDES		CO-ORDINATES	
Metres	ANGLES OF DIRECTION	Y	X
AB	324.85	Constant	0.00
BC	431.58	269 12 30	3 700 000.00
CD	166.11	89 02 30	+58 866.88
DE	39.71	84 57 30	+58 841.00
EF	22.85	79 08 00	+58 847.69
FG	13.46	166 06 00	+58 773.92
GH	15.75	128 03 00	+58 713.78
HJ	53.83	90 00 00	+58 788.42
JK	21.14	172 42 00	+58 775.51
KL	32.94	223 24 40	+58 778.74
LM	70.16	162 55 20	+58 793.14
MN	38.23	174 38 00	+58 854.98
NP	43.22	248 21 50	+58 857.66
PQ	72.07	183 09 30	+58 835.02
QR	179 11 10	179 11 10	+58 853.53
RS	9.73	222 04 00	+58 859.02
ST	10.00	133 35 40	+58 819.84
TU	25.00	89 11 10	+58 811.11
UV	16.04	125 53 00	+58 842.35
VA	34.58	162 34 40	+58 855.34
INDICATORY DATA			
FW	1.00	256 00 00	+58 774.54
FX	1.00	166 06 00	+58 775.75

AREAS

ERF NUMBER	SQUARE METRES	CO-ORDINATES
A1		+58 844.11
A2		+58 851.01
A3		+58 854.55
A4		+58 858.82
A5		+58 868.89
A6		+58 862.78
A7		+58 810.72
A8		+58 812.78
A9		+58 818.37
A10		+58 856.73
A11		+58 859.22
A12		+58 862.24
A13		+58 821.50
A14		+58 822.24
A15		+58 817.55
A16		+58 820.31
A17		+58 820.38
A18		+58 811.00
A19		+58 843.42
A20		+58 814.93
A21		+58 856.21
A22		+58 855.33
A23		+58 855.39
A24		+58 859.61
A25		+58 853.36
A26		+58 852.06
A27		+58 835.85
A28		+58 856.85
A29		+58 862.20
A30		+58 864.95
A31		+58 860.50
A32		+58 864.93
A33		+58 868.71
A34		+58 870.55
A35		+58 870.15
A36		+58 870.08
A37		+58 869.12
A38		+58 863.12
A39		+58 874.52
A40		+58 878.29
A41		+58 888.86
A42		+58 800.69
A43		+58 812.99
A44		+58 817.52
B1		+58 800.21
B2		+58 796.15
B3		+58 792.40
B4		+58 709.55
B5		+58 701.12
B6		+58 701.12
B7		+58 713.07
B8		+58 713.14
B9		+58 716.15
B10		+58 732.69
B11		+58 780.20
B12		+58 781.92
B13		+58 797.87
B14		+58 797.69
B15		+58 756.59
B16		+58 733.11
B17		+58 716.52
B18		+58 690.84
B19		+58 675.61
B20		+58 671.91
B21		+58 668.61
B22		+58 673.03
B23		+58 670.86
B24		+58 675.52
B25		+58 666.61
B26		+58 672.86
B27		+58 745.00
B28		+58 756.61
B29		+58 777.53
B30		+58 784.28
B31		+58 801.15
B32		+58 802.79
B33		+58 811.37
B34		+58 833.52
B35		+58 821.33
B36		+58 802.73
B37		+58 780.05
B38		+58 771.48
B39		+58 786.11
B40		+58 781.98
B41		+58 786.12
B42		+58 775.96
B43		+58 767.83
B44		+58 754.13
B45		+58 752.73
B46		+58 761.17
B47		+58 761.03
B48		+58 743.45
B49		+58 745.44
B50		+58 738.51
B51		+58 738.72
B52		+58 771.11
B53		+58 749.47
B54		+58 742.16
B55		+58 725.00
B56		+58 696.85
B57		+58 666.15
B58		+58 632.77
B59		+58 618.35
B60		+58 600.24
B61		+58 604.69
B62		+58 583.15
B63		+58 562.58
B64		+58 557.86
B65		+58 559.39
B66		+58 564.44
B67		+58 557.47
B68		+58 616.69
B69		+58 620.56
B70		+58 638.99
B71		+58 620.58
B72		+58 600.25
B73		+58 590.68
B74		+58 562.55
B75		+58 559.61
B76		+58 560.63
B77		+58 574.95
B78		+58 575.50

TOWN SURVEY MARKS

28A3	+58 806.07	+58 801.76
29A3	+58 652.04	+58 782.65

SERVITUDE NOTES
 1. ERVEN 9083-9095-9104 ARE SUBJECT TO A SERVICES SERVITUDE 4.00m WIDE AS SHOWN
 2. ERVEN 9111 9121 9123 ARE SUBJECT TO A SERVICES SERVITUDE 3.00m WIDE AS SHOWN
 3. ERF 9140 IS SUBJECT TO A SERVICES SERVITUDE 3.00m WIDE AS SHOWN
 4. ERVEN 9094, 9106, 9119 AND 9143 ARE SUBJECT TO A SERVITUDE IN ITS ENTIRETY
 9142

BEACON DESCRIPTIONS
 FOR BEACON DESCRIPTIONS SEE SHEET 2

THIS GENERAL PLAN WAS FRAMED BY ME AND I UNDERTAKE TO PLACE THE BEACONS OF THE ERVEN IN POSITIONS WHICH CORRESPOND WITH THE DATA ON THIS PLAN AND TO SUBMIT THE FINAL GENERAL PLAN AND THE SURVEY RECORDS PERTAINING THERE TO WITHIN THE PRESCRIBED PERIOD TO THE SURVEYOR - GENERAL FOR APPROVAL.

R. C. ABRAHAMSE
 PROFESSIONAL LAND SURVEYOR
 P.L.S. No. 0002 JUNE 2005

S.G. No. 3472/2005
 SHEET 1 OF 2 SHEETS

PROVISIONALLY APPROVED
 APPROVED
 for SURVEYOR - GENERAL
 2005.08.05

APPROVED IN TERMS OF SECTION 25 OF ORDINANCE 15/1985
 REFERENCE LUM/33/1443
 DATE 2004-12-17

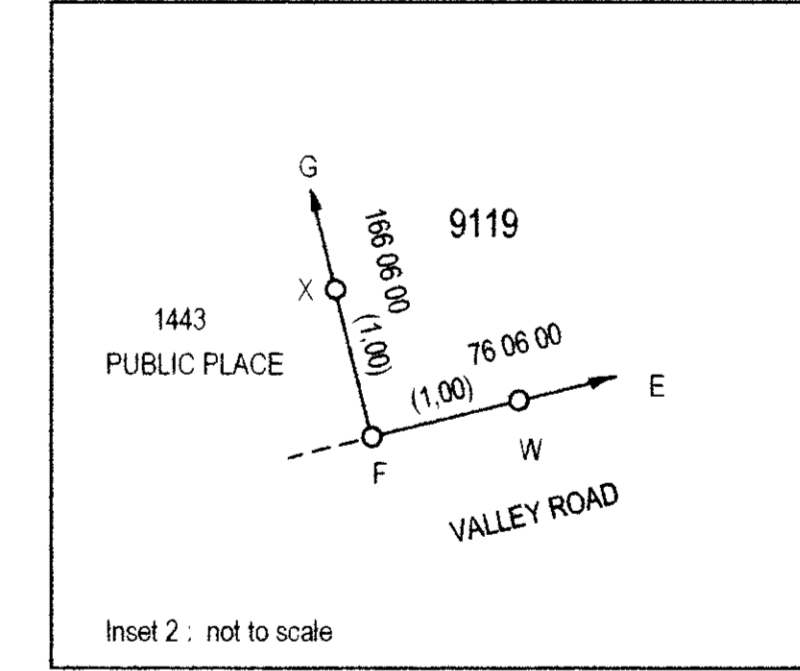
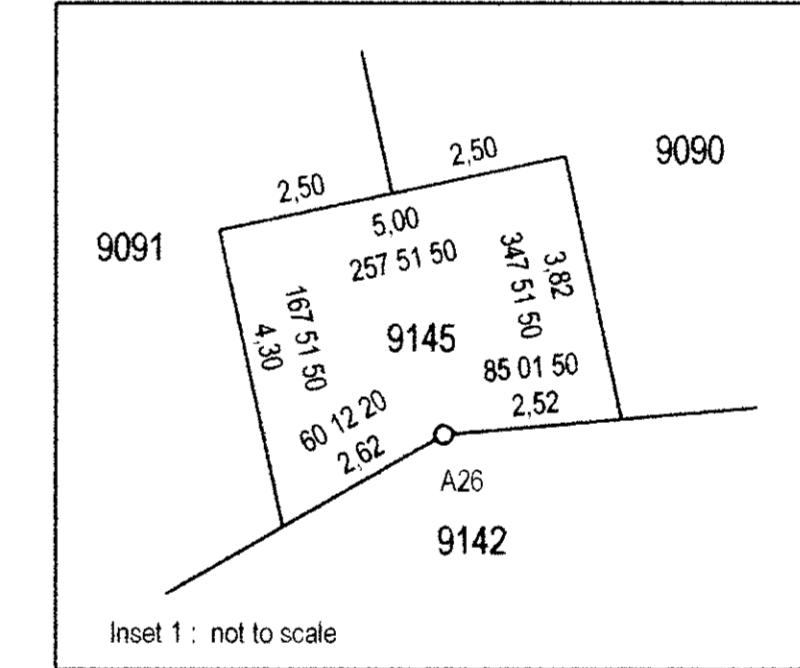
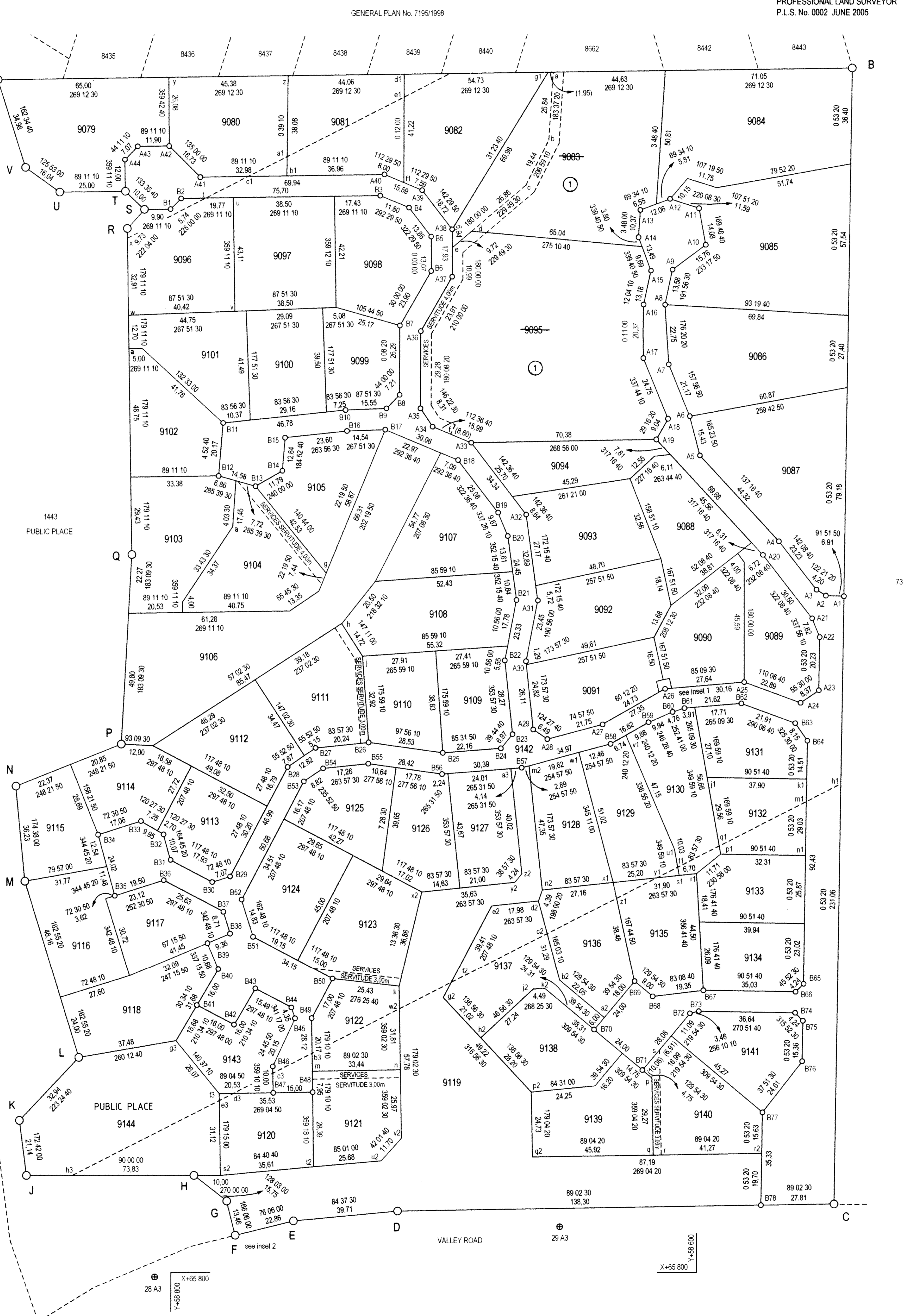
EXEMPT FROM THE PROVISIONS OF ACT 70 OF 1970 SECTION 1(a)

CDR
 (HOUT BAY ALLOTMENT AREA)

GENERAL PLAN No. 3472/2005
 OF
 SUBDIVISIONS OF ERF 8624 HOUT BAY
 VIDE DGM. No. 3471/2005 ANNEXED TO
 COMPRISING 66 ERVEN NUMBERED 9079 - 9143, 9145
 1 PUBLIC PLACE NUMBERED 9144
 SITUATE IN THE CITY OF CAPE TOWN
 ADMINISTRATIVE DISTRICT OF CAPE
 PROVINCE OF WESTERN CAPE
 SCALE 1:750

ENDORSEMENTS					
NO	AMENDMENT	ADDITION	AUTHORITY	INTD	DATE
1	Relayout of Erven 9083 & 9095	Erven 6043-44 See Amending G.P.4256/2006.	Ref. LUM/33/1443 Dated 13.06.2006. See S/5327/47.		

S. G. OFFICE NOTES



S. G. FILE No. S/5327/47
 S. G. S. R. E. No. E 1615 /2005
 COMPILATION
 AHNB-2244(M218)
 AHNB-2253(M220)
 AHNB-2272(M227)
 AHNB-2281(M230)

3472/2005 sht. 1

S.G. No. 3472/2005

SHEET 2 OF 2 SHEETS

APPROVED



for SURVEYOR - GENERAL 2006.07.13

CDR

(HOUT BAY ALLOTMENT AREA)

GENERAL PLAN No. 3472/2005

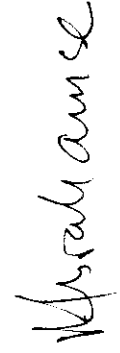
OF

SUBDIVISIONS OF ERF 8624 HOUT BAY

SITUATE IN THE CITY OF CAPE TOWN
ADMINISTRATIVE DISTRICT OF CAPE
PROVINCE OF WESTERN CAPE

SCALE 1 : 75

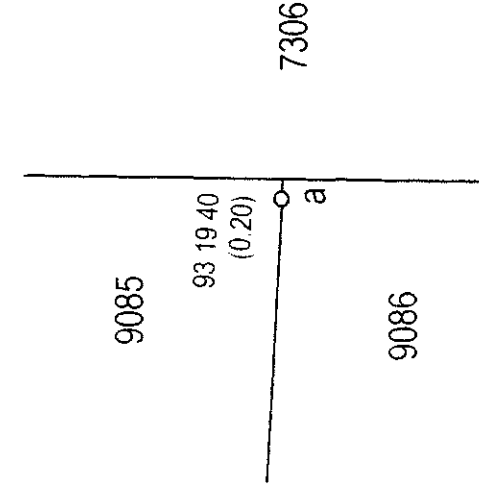
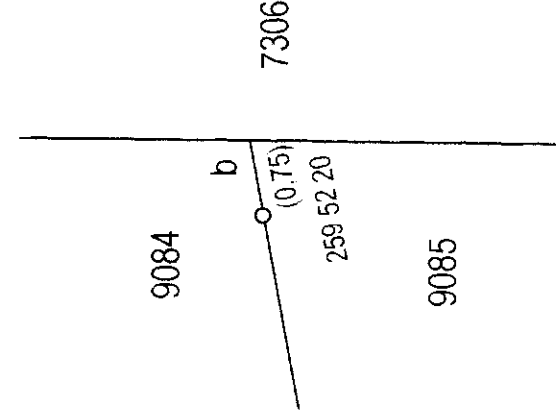
SURVEYED BETWEEN NOVEMBER 2005 AND APRIL 2006
BY ME



R. C. ABRAHAMSE
PROFESSIONAL LAND SURVEYOR
P.L.S. No. 0002

BEACON DESCRIPTIONS

- | | |
|----------------------------------|--------------------|
| B.E | Iron standard |
| C | Wooden fence post |
| D | Drill hole on wall |
| 9084b, 9086a | No beacon |
| A30, B38, B44, B73, 9102a, 9104a | Drill hole |
| f3 | Corner metal fence |
| All others | 12mm iron peg |



S. G. FILE No. S/5327/47
S. G. S.R.E. No. E 1615/2005
COMPILATION
AHNB-2244(M218)
AHNB-2253(M220)
AHNB-2272(M227)
AHNB-2281(M230)

LPI C0160024